



1399-B102-08A
TWIN BAR BLACK ICE

2008-10 C Class Sedan Grille

1399-0102-08A ULTIMATE Twin Bar Fine Mesh Grille



1399-0102-08AS
Open Style Chrome Plated

2008-10 C Class Sedan Black Ice

1399-0102-08AS ULTIMATE Open Series BLACK ICE Fine Mesh Grille



2010 GLK Heavy Mesh Grille

1159-0104-10 ULTIMATE Heavy Mesh Twin Bar Grille



1158-0102-09A
Twin Bar Chrome Plated

2009/10 M Class Black Ice Grille

1158-B102-09A ULTIMATE Twin Bar Fine Mesh Grille



1158-0102-09AS
Twin Bar Chrome Plated

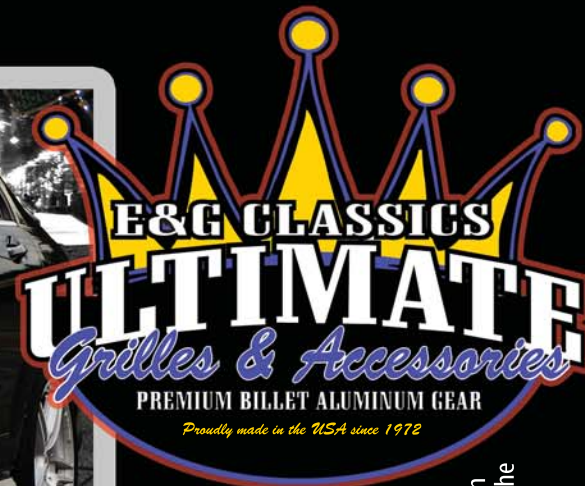
2009/10 M Class Heavy Mesh

1158-0104-09AS ULTIMATE Open Style Heavy Mesh Grille



2010 E Class Sedan Heavy Mesh

1353-0104-10A ULTIMATE Twin Bar Heavy Mesh Grille *
* Mercedes Benz star emblem in grille is not included & must be purchased by the customer MB part# A 251 888 00 86



Mercedes-Benz



E&G Classics ULTIMATE SERIES Grilles & Vents begin the manufacturing process as laser cut pieces of billet aluminum. Once cut, the blank surround is precisely CNC machined, beveled, and faceted for a multi-dimensional appearance that's just not possible when using a piece of flat steel. When the surround has been beautifully crafted, E&G sends it out to be chrome plated to perfection. The product is then hand assembled by one of our craftsmen right here in Columbia, Maryland USA. Very few companies can offer this level of product detail, quality, and craftsmanship at the price of an E&G ULTIMATE SERIES item. ULTIMATE SERIES products are for the discriminating buyer with the passion to place the "ultimate accessory" on their vehicle. Each one of our E&G Classic products mirrors the vehicles manufacturer warranty in terms of length and mileage. You can rest assured that you've invested in the absolute highest quality, American made product that money can buy. We take no shortcuts here at E&G Classics to ensure our customers of a precision fitting product that's delivered with impeccable American craftsmanship. Now that's the ULTIMATE experience... That's E&G Classics.